



Rabbit anti Rel (pS503) Polyclonal Antibody

Alternative Name(s): v-rel reticuloendotheliosis viral oncogene homolog; C-Rel

Order Information

- **Description:** Rel (pS503)
- **Catalogue:** 500-12024
- **Lot:** See label
- **Size:** 100ug/200ul
- **Host:** Rabbit
- **Clone:** nan
- **Application:** IHC(P), WB, IP
- **Reactivity:** Hu, Ms

ANTIGEN PREPARATION

A synthetic peptide corresponding to the epitope –TTSSDS-at a phosphorylation site Ser503 of human c-Rel protein. This sequence is identical within human and mouse.

BACKGROUND

The REL gene encodes c-Rel, a transcription factor that is a member of the Rel/NFKB family, which also includes RELA, RELB, NFKB1, and NFKB2. These proteins are related through a highly conserved N-terminal region termed the 'Rel domain,' which is responsible for DNA binding, dimerization, nuclear localization, and binding to the NFKB inhibitor. C-Rel protooncogene can be formed immune complexes with other proteins such as p105, p50 NFKB under phosphorylation status

PURIFICATION

The Rabbit IgG is purified by site-modified Epitope Affinity Purification.

FORMULATION

This affinity purified antibody is supplied in sterile Tris-buffered saline (pH7.2) containing antibody stabilizer

SPECIFICITY

This antibody recognizes Rel with the phosphorylation site Ser503. It does not cross-react with non-phosphospecific peptide.

STORAGE

The antibodies are stable for 24 months from date of receipt when stored at –20oC to –70oC. The antibodies can be stored at 2oC-8oC for three month without detectable loss of activity. Avoid repeated freezing-thawing cycles.

APPLICATIONS/SUGGESTED WORKING DILUTIONS*

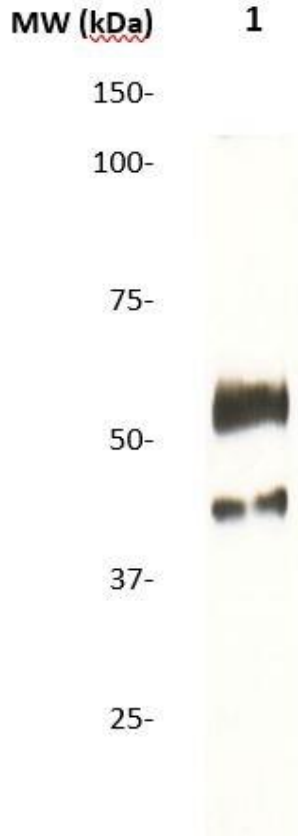
- Western Blot: 0.1-1 µg/ml
- ELISA: 0.01-0.1 µg/ml
- Immunoprecipitation: 2-5 µg/ml
- IHC: 2-10 µg/ml
- Flow cytometry: Not tested
- Molecular Weight: 68.0
- Positive Control: Kidney Tissue
- Cellular Location: Cell Membrane

*Optimal dilutions should be determined by researchers for the specific applications.

FOR RESEARCH USE ONLY.

AbboMax, Inc 2528 Qume Drive, Suite 8, San Jose, California 95131, USA
1 408-573-1898 (Tel). 1 408-573-1858 (Fax). www.abbomax.com info@abbomax.com

DATA ATTACHMENTS



Western Blot: The cell lysate derived from PMA treated Jurkate cells was immunoprobed by Rabbit anti-c-Rel (pS503) (Cat#500-12024) at 1:500. A major immunoreactive band is observed around ~68kDa.

REFERENCES

FOR RESEARCH USE ONLY.